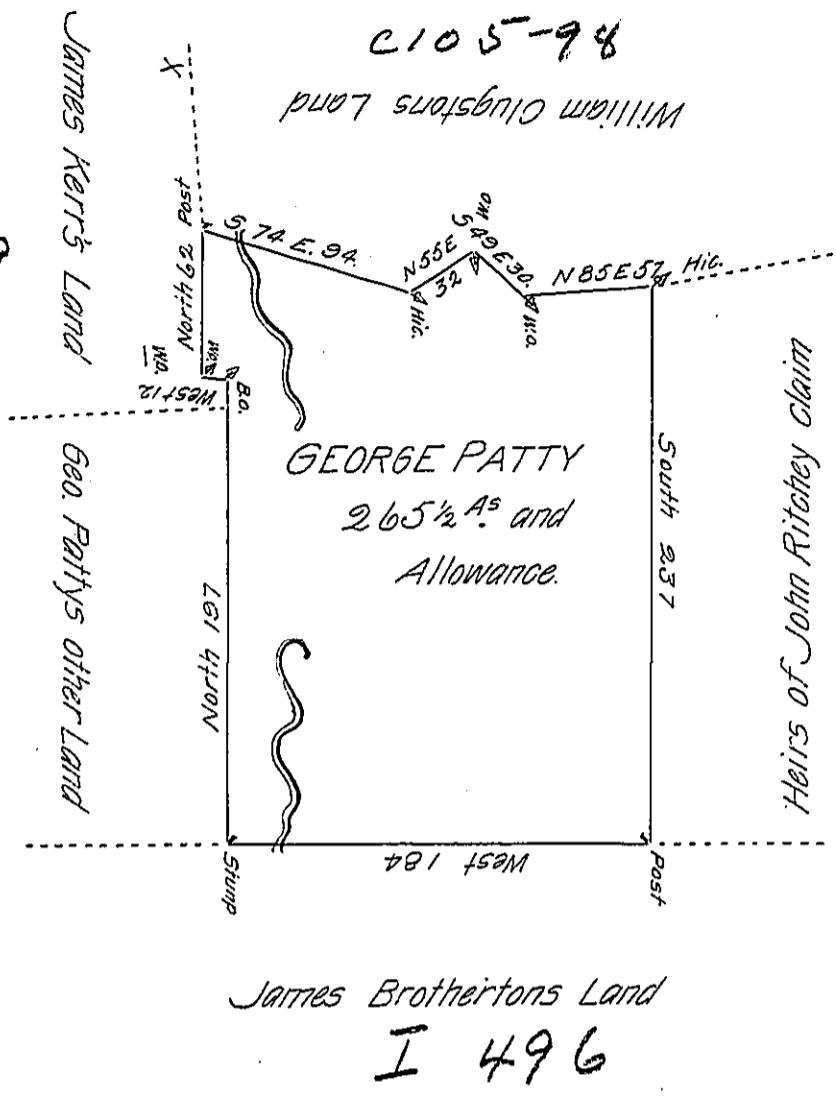


C 97-239

C 197-62



A Draught of a Tract of Land Situate in Hempfield Township in the County of Westmoreland containing two hundred and Sixty five and an <sup>half</sup> Acres and the Allowance of Six P Cent for dated 3. April 1769. Roads & Survey'd the 8th. Day of May 1770 to George Patty on his Order N<sup>o</sup> 1435 by Robert McCrea then Deputy Surveyor taken from his Draught of the same now in my Office which I have examined and find correct.

Certified the 10th. Day of March 1803.

by John Moore D.S.

To Samuel Cochran Esquire }  
Surv<sup>r</sup> Gen<sup>l</sup> of Penn<sup>a</sup> }

IN TESTIMONY that the above is a copy of the original remaining on file in the Department of Internal Affairs of Pennsylvania, made conformably to an Act of Assembly approved the 16th day of February, 1833, I have hereunto set my Hand and caused the Seal of said Department to be affixed at Harrisburg, this seventeenth day of May 1906.

*Asa D. [Signature]*  
Secretary of Internal Affairs.